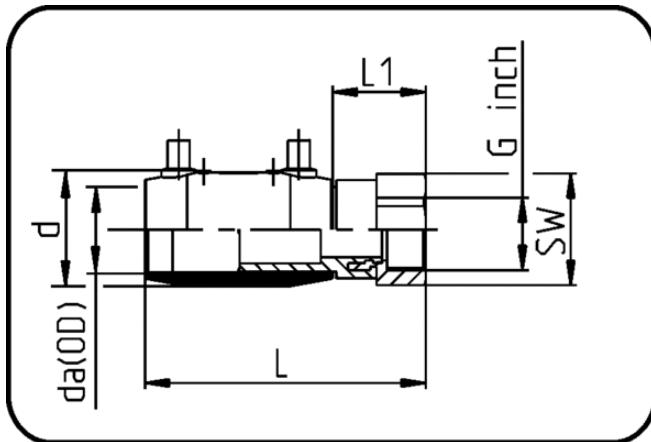


Electro Fusion Fittings



Code: 184

- **E-Adaptor Socket**
- with brass-female thread
- W/P-TW
- injection moulded
- **Electro-fusion**
- **PE 100-RC black**

Dimension	Code	Detail	da(OD) mm	L mm	L1 mm	d mm	SW mm	G inch	Weight
20 X 1/2	70.184.2020.11	20X1/2" SDR 11 PN16	20	111	37	30	32	0,5	0.16
25 X 3/4	70.184.2525.11	25X3/4" SDR 11 PN16	25	121	40	35	36	0,75	0.19
32 X 1	70.184.3232.11	32X1" SDR 11 PN16	32	133	44	42	41	1	0.25
40 X 1 1/4	70.184.4040.11	40X1 1/4" SDR 17-11 PN16	40	148	49	53	50	1,25	0.38
50 X 1 1/2	70.184.5050.11	50X1 1/2" SDR 17-11 PN16	50	167	56	67	60	1,5	0.69
63 X 2	70.184.6363.11	63X2" SDR 17-11 PN16	63	194	67	83	70	2	0.98